

Surge protection device - TT-2-PE- 24DC - 2838186

Please be informed that the data shown in this PDF Document is generated from our Online Catalog. Please find the complete data in the user's documentation. Our General Terms of Use for Downloads are valid (<http://phoenixcontact.com/download>)



Modular terminal block with three-stage surge protection for a floating double conductor, separate ground connection, nominal voltage: 24 V DC, for mounting on NS 35/7.5, terminal width: 6.2 mm, terminal height: 54,6 mm

Product Features

- Versions with and without disconnect knife
- Protection of a floating double wire
- Protection of two signal wires with common reference potential
- Multi-stage modular terminal blocks with screw connection technology
- Disconnection of signal circuits by disconnect knife
-



Key commercial data

Packing unit	1 pc
Weight per Piece (excluding packing)	28.0 GRM
Custom tariff number	85363010
Country of origin	Germany

Technical data

Dimensions

Height	79.6 mm
Width	6.2 mm
Depth	54.6 mm

Ambient conditions

Ambient temperature (operation)	-40 °C ... 85 °C
Degree of protection	IP20

Surge protection device - TT-2-PE- 24DC - 2838186

Technical data

General

Housing material	PA 6.6
Inflammability class according to UL 94	V-0
Color	black
Standards for clearances and creepage distances	IEC 60664-1
Mounting type	DIN rail: 35 mm
Type	Double-level terminal block with PE foot – separate PE connection
Number of positions	2
Direction of action	Line-Line & Line-Earth Ground

Protective circuit

IEC test classification	C1
	C2
	C3
	D1
Nominal voltage U_N	24 V DC
Maximum continuous voltage U_C	30 V DC
Maximum continuous voltage U_C (wire-wire)	30 V DC
Nominal current I_N	300 mA (40°C)
Operating effective current I_C at U_C	$\leq 10 \mu\text{A}$
Standby power consumption P_C	$\leq 730 \text{ mVA}$
Residual current I_{PE}	$\leq 1 \mu\text{A}$
Nominal discharge current I_n (8/20) μs (Core-Core)	5 kA
Nominal discharge current I_n (8/20) μs (Core-Earth)	5 kA
Total surge current (8/20) μs	10 kA
Nominal pulse current I_{an} (10/1000) μs (Core-Core)	100 A
Nominal pulse current I_{an} (10/1000) μs (Core-Earth)	100 A
Impulse discharge current (10/350) μs , peak value I_{imp}	500 A
Output voltage limitation at 1 kV/ μs (Core-Core) spike	$\leq 45 \text{ V}$
Output voltage limitation at 1 kV/ μs (Core-Earth) spike	$\leq 650 \text{ V}$
Voltage protection level U_p (core-core)	$\leq 70 \text{ V}$ (C2 - 10 kV / 5 kA)
	$\leq 55 \text{ V}$ (C1 - 1 kV/500 A)
	$\leq 45 \text{ V}$ (C3 - 10 A)
	$\leq 45 \text{ V}$ (C3 - 100 A)
Voltage protection level U_p (core-ground)	$\leq 850 \text{ V}$ (C2 - 10 kV / 5 kA)
	$\leq 650 \text{ V}$ (C1 - 1 kV/500 A)
	$\leq 850 \text{ V}$ (C3 - 10 A)
	$\leq 900 \text{ V}$ (C3 - 100 A)

Surge protection device - TT-2-PE- 24DC - 2838186

Technical data

Protective circuit

	≤ 800 V (D1 - 500 A)
Response time tA (Core-Core)	≤ 1 ns
Response time tA (Core-Earth)	≤ 100 ns
Input attenuation aE, sym.	typ. 0.6 dB (≤ 500 kHz / 50 Ω)
	typ. 0.3 dB (≤ 160 kHz/150 Ω)
Cut-off frequency fg (3 dB), sym. in 50 Ohm system	typ. 3 MHz
Cut-off frequency fg (3 dB), sym. in 150 Ohm system	typ. 1 MHz
Capacity (Core-Core)	≤ 4 nF
Resistance in series	3.7 Ω 10 % (per path)
	3.7 Ω
Surge protection fault message	None
Max. required back-up fuse	315 mA (T/IEC 60127-2/3)
Impulse durability (conductor-conductor)	C1 - 1 kV/500 A
	C2 - 10 kV/5 kA
	C3 - 100 A
Impulse durability (conductor-ground)	C1 - 1 kV/500 A
	C2 - 10 kV/5 kA
	C3 - 100 A
	D1 - 500 A
Alternating current carrying capacity (conductor-conductor)	0.25 A/1s
Alternating current carrying capacity (conductor-ground)	0.25 A/1s
Pulse reset time (conductor-conductor)	≤ 400 ms, at U_c and 330 mA
Pulse reset time (conductor-ground)	≤ 400 ms, at U_c and 330 mA

Connection data

Connection method	Screw connection
Connection type IN	Screw terminal blocks
Connection type OUT	Screw terminal blocks
Screw thread	M3
Tightening torque	0.6 Nm
Stripping length	8 mm
Conductor cross section stranded min.	0.2 mm ²
Conductor cross section stranded max.	2.5 mm ²
Conductor cross section solid min.	0.2 mm ²
Conductor cross section solid max.	4 mm ²
Conductor cross section AWG/kcmil min.	24
Conductor cross section AWG/kcmil max	12

Surge protection device - TT-2-PE- 24DC - 2838186

Technical data

Standards and Regulations

Standards/regulations	IEC 61643-21
	EN 61643-21

Classifications

eCl@ss

eCl@ss 4.0	27140201
eCl@ss 4.1	27130801
eCl@ss 5.0	27130801
eCl@ss 5.1	27130801
eCl@ss 6.0	27130807
eCl@ss 7.0	27130807
eCl@ss 8.0	27130807

ETIM

ETIM 2.0	EC000943
ETIM 3.0	EC000943
ETIM 4.0	EC000943
ETIM 5.0	EC000943

UNSPSC

UNSPSC 6.01	30212010
UNSPSC 7.0901	39121610
UNSPSC 11	39121610
UNSPSC 12.01	39121610
UNSPSC 13.2	39121620

Approvals

Approvals

Approvals

GL / UL Listed / EAC / EAC

Ex Approvals

UL Listed / cUL Listed / cULus Listed

Surge protection device - TT-2-PE- 24DC - 2838186

Approvals

Approvals submitted

Approval details

GL

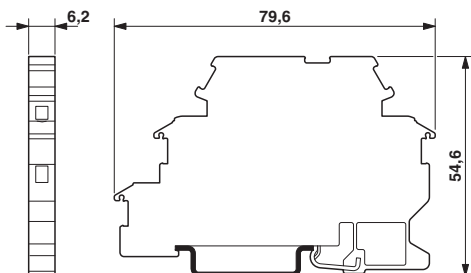
UL Listed

EAC

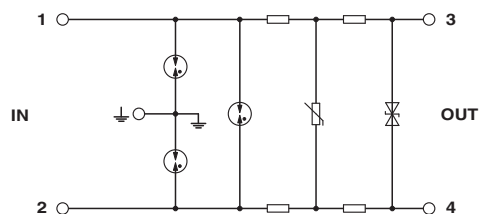
EAC

Drawings

Dimensional drawing



Circuit diagram



Surge protection device - TT-2-PE- 24DC - 2838186

Schematic diagram

